



CATHOLIC ARCHDIOCESE  
OF MELBOURNE

## Welcome to Safeguarding ALIVE!

Dear friends

In this edition of *Safeguarding ALIVE*:

- the *Safeguarding Essentials* online training is released for parish volunteers and clergy
  - we say goodbye and hello to some Professional Standards Unit (PSU) team members
  - we prepare for Child Protection Week (4–10 September) and Safeguarding Sunday (11 September) with some new resources for parish use
  - we share some helpful information for managing issues and media queries at your parish
  - you will find links to new e-learning resources and information on how to access upcoming training opportunities.
-



## *New Victorian Child Safe Standards*

The new Victorian Child Safe Standards (VCSS) have been in effect since 1 July. Parishes can find more information at our *new* Victorian Child Safe Standards webpage [here](#). Resources include:

- a link to a webinar recording and a copy of the presentation PDF
- links to a series of new PSU VCSS information sheets
- a *new* Self-Assessment Tool for Victorian Child Safe Standard 1.

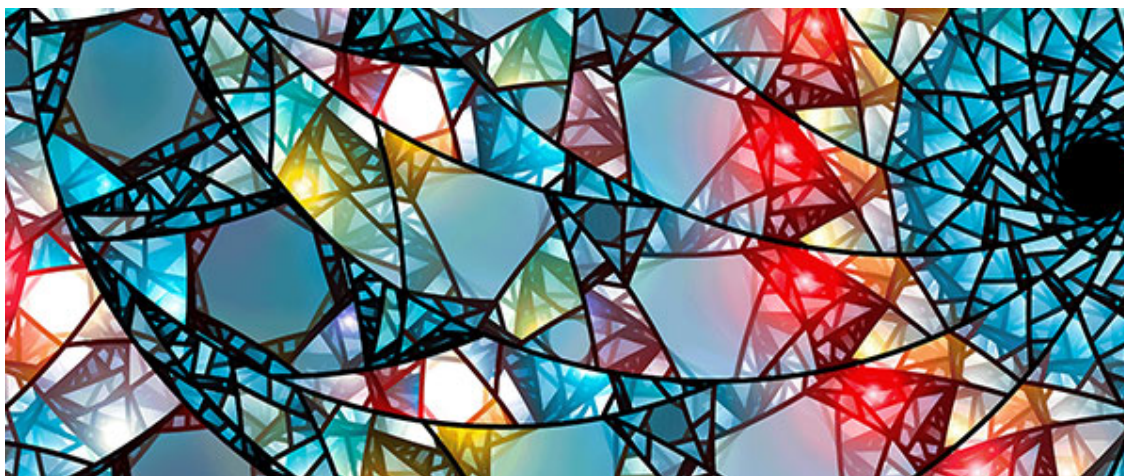
### **New e-learning resource**

#### **Aboriginal Cultural Safety—A conversation with Sherry Balcombe and Michael Chisholm**

Loretta Hoban (Policy Advisor, Professional Standards Unit) leads a conversation with Sherry Balcombe (Manager, Aboriginal Catholic Ministry Victoria) and Michael Chisholm (Aboriginal and Torres Strait Islander Education Team Lead, Sandhurst Diocese) to discuss the concept of cultural safety and its importance and practical application within our parishes.

To view this recording, click [here](#).

---



### *PSU team changes*

Ryan Gardiner, Safeguarding Officer—Western Region, has left his role at the Archdiocese to pursue other employment opportunities and pathways. The PSU sincerely wishes Ryan all the best with his future endeavours.

We are also excited to announce that Rosemary Teed has been appointed as Safeguarding Officer—Western Region. Rosemary is no stranger to the Archdiocese and was part of the PSU team throughout 2020–2021. After a year in leadership positions working with children, young people and families experiencing complex issues, including mental health issues, Rosemary returned to the PSU on 22 August. Her knowledge, experience, relationship-building skills and existing parish connections will be invaluable in her work with parishes.



## *Safeguarding Essentials online training is now live!*

### **The long-awaited *Safeguarding Essentials* online training module for all clergy and volunteers is now live!**

*Safeguarding Essentials* is a 30-minute online training module for all clergy and volunteers within the Catholic Archdiocese of Melbourne. Employees will soon be able to access the training module on Employment Hero.

This accessible and engaging resource provides clergy and volunteers with foundational knowledge and a clear understanding of their duty of care and expectations in relation to safeguarding children, young people and vulnerable persons from all forms of abuse and harm.

This will be:

- an annual requirement for everyone
- possible to complete individually online.

At the completion of the training:

- participants will receive a certificate of completion
- the parish will also receive notification that the module has been completed successfully.

### **How to access the training**

To access the online training go to: [www.safeguarding.melbournecatholic.org](http://www.safeguarding.melbournecatholic.org)

To login, each volunteer or clergy member will need:

- their unique Working with Children Check ID
- an email address.

To register, **clergy** will need to select '**Archdiocese of Melbourne**' from the dropdown menu as their Primary Organisation of Service.

To register, **volunteers** will need to select their **parish** from the dropdown menu as their Primary Organisation of Service.

### **Hosting group training sessions**

For those parishes who would like to host a group session, one Working with Children Check ID is necessary to log in, and the person with that ID will receive the certificate of completion.

For the group sessions, parishes are advised to record those in attendance and set an annual reminder for completion. They may also issue certificates of completion.

## FAQ

Q: When I click on the URL provided to access the online training, I cannot see the Working with Children Check (WWCC) ID box where I am to sign in. How do I locate this?

A: It is likely the internet browser you are using is not up to date. You will need to download another browser (Google Chrome, Microsoft Edge, Safari or Firefox).

Q: I want to better understand what my WWCC ID will be used for and how my privacy will be protected?

A: The WWCC ID is used to record who has registered and successfully completed the training. As explained on the registration page for the module, participants' privacy is protected in accordance with the [CAM Privacy Policy](#).

If you are having difficulties accessing the online training module, you are advised to try to resolve it within your parish. However, if you continue to experience difficulties you should log a job with the IT help desk at: [service.desk@cam.org.au](mailto:service.desk@cam.org.au)



## *Safeguarding lens*

**Child Protection Week (4–10 September) and Safeguarding Sunday (11 September)**



Child Protection Week is a national campaign held each year to raise awareness of child-abuse prevention in our communities. In 2022, the overarching message of 'Every child, in every community needs a fair go' will be embraced for Child Protection Week. A particular focus this year will also be on the right of children and young people to grow up in environments that support them according to their needs. As we know, when children and young people grow up safe, connected and supported in their families, communities and culture, they thrive.

In the Catholic Church, Child Protection Week is highlighted through Safeguarding Sunday, on 11 September 2022.

As part of Child Protection Week, the PSU is running two 90-minute sessions of an interactive workshop, Handling Disclosures of Abuse, on Wednesday 7 and Wednesday 14 September. Due to popular demand, both sessions have already sold out, but if you would like to be put on a waiting list for future sessions of this workshop, please email the PSU at [psu@cam.org.au](mailto:psu@cam.org.au).

The Australian Catholic Bishops Conference (ACBC) have also released a suite of resources for parishes to use to celebrate Safeguarding Sunday, marking the end of Child Protection Week. To access these resources, please click [here](#).

The National Association for Prevention of Child Abuse and Neglect (NAPCAN) also have a program of [webinars](#) available during Child Protection Week, and a [children's activity booklet](#) with creative activities designed to foster conversations about safety, in addition to an array of [resources and tools](#) to promote this event.



## *Parish in focus*

### **WWCC important reminders**

- If a person declines to apply for or provide a WWCC, they are not permitted to engage in work or undertake a voluntary role within the Catholic Archdiocese of Melbourne
  - It is important that each individual registers and links their WWCC to the parish, agency or entity where they are volunteering and/or working. This will enable the parish, agency or entity to be notified if there is a change in the status of that person's WWCC (such as suspension, or withdrawal due to relevant charges or convictions).
  - WWCC details can be updated through the [MyCheck function](#) of the Working with Children Check website.
  - The Department of Justice and Community Safety also has a [downloadable WWCC Status Checker](#). This document allows you to check and record the status of multiple cards or applications. This spreadsheet can be incorporated into any existing Excel spreadsheet.
  - Victorian Institute of Teaching (VIT) card holders should note that while all registered teachers with VIT are exempt from applying for a separate WWCC card, all teachers *must* notify Working with Children Check Victoria (WWCCV) of any child-related work they do outside of their teaching in a school or early childhood service, regardless of whether it is paid or voluntary work. More information can be found [here](#), where you will also find the [notification form](#).
  - Under the *Worker Screening Act 2020*, penalties include two years imprisonment or a fine of \$39,652.80, or both, for individuals who have knowingly engaged, continue to engage or recklessly engage a person in child-related work who does not have a valid WWCC. For a more detailed list of penalties and further information, please visit the [Offences and Penalties section](#) of the WWCC website.
-



### *Issues management and media enquiries*

Media interest in events and people can be generated for all sorts of reasons. This kind of publicity is often good, but there may be times when it is both challenging and concerning for your community.

When this kind of media story breaks, it can be quite daunting for a parish to be in the spotlight and to have to deal with a wave of enquiries. When responding to this kind of attention:

- be helpful, polite and positive—in all circumstances
- take full details of the enquiry, including the journalist's name, contact details, publication and deadline
- it is best not to respond immediately. However, **don't say, 'No comment'**. Ask for details of their enquiry and say that you will need to contact the appropriate person to speak with them, or to respond to their email enquiry
- consider passing on the contact details of the Catholic Archdiocese of Melbourne's Chancellor and Director of Communications:

**ANNIE CARRETT** (Chancellor and Director of Communications)

0439 600 233 | [annie.carrett@cam.org.au](mailto:annie.carrett@cam.org.au)

Before passing on Annie's contact details, though, make contact with her so you can brief her on the matter.

### **Considerations**

- Annie will also be able to assist in providing responses for the parish staff and community, and a communication plan for longer-term issues.



- A reporter does not need your permission to write or print anything you say, so even a small comment or remark can be taken up and used out of context. Taking time for a considered response is valuable.
- People in your parish community, past and present, need to be respected from a privacy perspective. This is particularly critical when it comes to children or vulnerable persons. It is advisable never to offer commentary of any sort on a person until a matter is reviewed, or permission is given.



### *New resources*

#### **Empowering children and young people webinar**

On 20 July, the PSU co-facilitated a webinar with the Discipleship team of Proclaim: Office for Missionary Renewal, which explored the concept of empowering children and young people within our parishes. During this webinar, we also heard from parish representatives about practical ways in which they have engaged children, sought their participation and increased their involvement.

We would like to thank the following panellists for their time and valued contribution:

- Pauline Duff—Safeguarding Committee (Kilmore Parish)
- Carmel Barker—Catechist Leader (Mordialloc/Aspendale Parish)
- Fr Trac Nguyen—Assistant Priest (Camberwell, Balwyn, Deepdene, Surrey Hills and Wattle Park parishes)

To view a recording of the webinar and to access related resources, please click [here](#).

---



*We want to hear from you*

Tell us what future training topics you would be interested in and what safeguarding resources would be of benefit to your parish and team.

Take our quick [survey here](#).

---

### Get in touch with the PSU team

Dr. Katherine Levi

Director

[Katherine.Levi@cam.org.au](mailto:Katherine.Levi@cam.org.au) | 0439 435 182

Loretta Hoban

Policy Advisor and National Redress Scheme Coordinator

[Loretta.hoban@cam.org.au](mailto:Loretta.hoban@cam.org.au) | 0429 816 342

Safeguarding Officers:

Tamara Cugnetto (Southern Region)

[Tamara.cugnetto@cam.org.au](mailto:Tamara.cugnetto@cam.org.au) | 0447 128 125

Luisa Pisano (Northern Region)

[Luisa.pisano@cam.org.au](mailto:Luisa.pisano@cam.org.au) | 0439 205 682

Brech Burgess (Eastern Region)

[Brech.burgess@cam.org.au](mailto:Brech.burgess@cam.org.au) | 0448 474 731

Rosemary Teed (Western Region)

[Rosemary.Teed@cam.org.au](mailto:Rosemary.Teed@cam.org.au) | 0417 142 546



CATHOLIC ARCHDIOCESE  
OF MELBOURNE

#### CONTACT US

Professional Standards Unit  
Catholic Archdiocese of Melbourne  
Phone: 9926 5621 | Email: [psu@cam.org.au](mailto:psu@cam.org.au)  
PO BOX 146 East Melbourne VIC 8002  
[www.melbournecatholic.org/safeguarding](http://www.melbournecatholic.org/safeguarding)

Missed an edition? [View previous editions of the PSU Safeguarding newsletter](#)

*The Archdiocese is committed to the safety, wellbeing and human dignity  
of children, young people and adults.*

This email was sent to [meyer@a1.com.au](mailto:meyer@a1.com.au)

[why did I get this?](#) [unsubscribe from this list](#) [update subscription preferences](#)

Catholic Archdiocese of Melbourne · 383 Albert St · EAST MELBOURNE, VIC 3002 · Australia